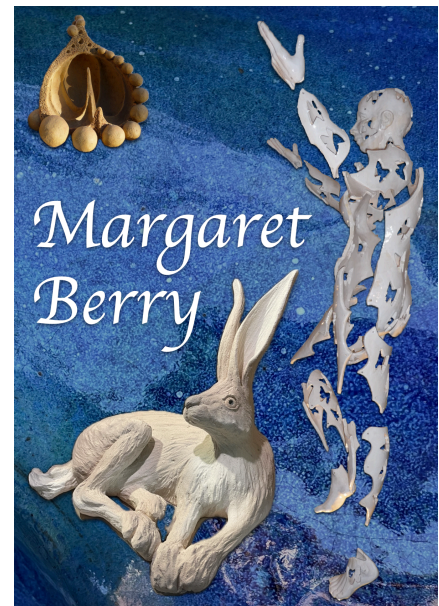




Pricing Guide

Margaret prices her work based on the hours taken to sculpt, glaze and handle through the firing cycles. She applies a labour hourly rate of minimum wage. She doesn't charge the time taken in design because more than one sculpture can be derived from the initial cycle of analysis, design and test. It would be hard to apportion.

Her cost calculations consider the dimensions of the piece, its complexity/ technical difficulty to create, the pro-rata firing costs, incidental costs such as heating and light and the necessary numerous materials. She uses time and motion studies.



To finish, Margaret reviews each sculpture based on a number of weighted metrics such as whether the final piece was a successful interpretation of the original objective. Approximately 90% of the price is always in the labour hours to create it. The exception is the introduction of lustres such as platinum, gold, silver, pearl and so on.

Margaret currently uses neither plaster nor press moulds, nor does she use armatures. These have impacts on her labour time but she doesn't yet feel her work is good enough for repeats, although she does feel the time to move to copies is close.

Example prices.

A seated hare about a foot tall takes about 7 hours.

A seated hare about a foot and a half tall takes about 12-15 hours.

A hare standing on all four legs takes at least 15 hours.

A bust with hair that stands proud of the sculpture takes at least 30 hours.

A large suspended piece takes at least 140 hours. Framing is charged separately. Steel and timber framing are costed on application and these are optional. Sometimes a qualified engineer is required to confirm frame limitations for load.

30th July 2024

www.MargaretBerry.com
@Margaret4Art

07968 030 521

